



DESMARAIS  
BARRÉ.com  
COURTIERS IMMOBILIERS

Humanisez  
vos transactions  
immobilières



**1158, 9E RANG, SAINT-HERMÉNÉGILDE**

**315 000 \$**

MLS / ID #13838905

## DESCRIPTION

## ROOMS DETAILS

Room	Level	Floor cover	Infos
Kitchen	1st level/Ground floor	Ceramic tiles 13.6x11 P	
Dining room	1st level/Ground floor	Floating floor 16.8x10.4 P	
Living room	1st level/Ground floor	Floating floor 23x13 P	
Washroom	1st level/Ground floor	Ceramic tiles 8x7 P	
Den	2nd floor	Floating floor 11.8x9.6 P	
Primary bedroom	2nd floor	Floating floor 17x11 P	
Bathroom	2nd floor	Ceramic tiles 15x7.6 P	

Room	Level	Floor cover	Infos
Bedroom	2nd floor	Floating floor 12x10 P	
Bedroom	2nd floor	Floating floor 12x9.10 P	

## GENERAL

Price	315 000 \$
Time occupation	60 days
Financial recovery	No
Lot's evaluation	73 800 \$
Building evaluation	221 200 \$
Total evaluation	295 000 \$

## COSTS

Energy cost	2 660 \$
Municipal Taxes	1 642 \$
School taxes	114 \$
Total	4 416 \$

## OTHER INFORMATIONS

Type	One-and-a-half-storey house
Year evaluation	2025
Seller's declaration	See listing broker
Property Category	Residential
Type of building	Detached
Frontview of the building	10.55 Meters
Depth of the building	7.43 Meters

## OTHER INFORMATIONS

<b>Lot frontage</b>	249.88 Meters
<b>Lot area</b>	16121 Square meters
<b>Number of pieces</b>	9
<b>Number of rooms</b>	3
<b>Number of bedrooms above ground</b>	3
<b>Number of bathrooms</b>	1
<b>Number of water rooms</b>	1
<b>Status</b>	Active
<b>Sale without warranty</b>	E

## ADDITIONAL FEATURES

<b>Carport</b>	Detached
<b>Driveway</b>	Not Paved
<b>Landscaping</b>	Fenced, Landscape
<b>Cupboard</b>	Wood
<b>Heating system</b>	Space heating baseboards, Air circulation, Electric baseboard units
<b>Water supply</b>	Artesian well
<b>Heating energy</b>	Electricity, Wood
<b>Equipment available</b>	Wall-mounted heat pump
<b>Windows</b>	PVC
<b>Foundation</b>	Poured concrete
<b>Garage</b>	Detached
<b>Siding</b>	Vinyl, Rock imitation
<b>Distinctive features</b>	Wooded lot: hardwood trees, No neighbours in the back
<b>Proximity</b>	Cross-country skiing
<b>Basement</b>	6 feet and over



# ADDITIONAL FEATURES

**Parking** Outdoor (7), In carport (1), Garage (1)

**Sewage system** Purification field, Septic tank

**Window type** Sliding

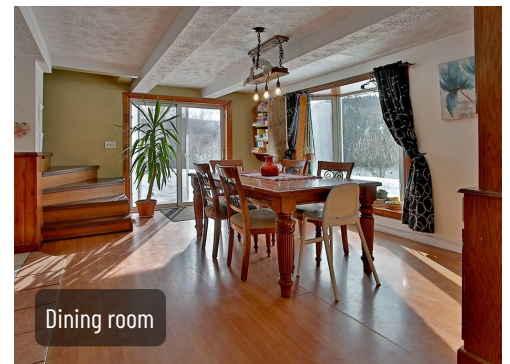
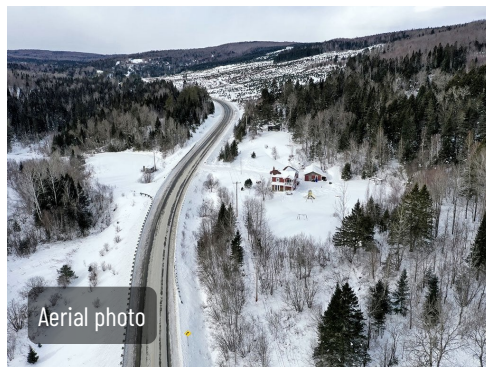
**Roofing** Asphalt shingles

**Topography** Sloped, Flat

**View** Mountain

**Zoning** Residential

# PICTURES





# PICTURES





# PICTURES



Bathroom



Bedroom



Bedroom



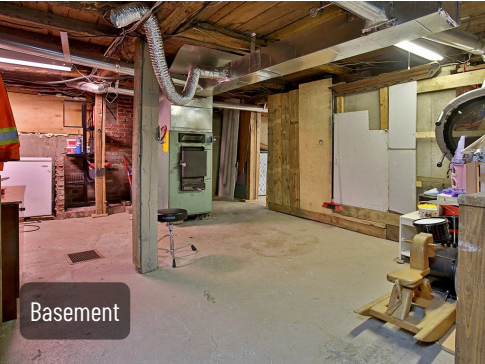
Bedroom



Family room



Basement



Basement



Basement



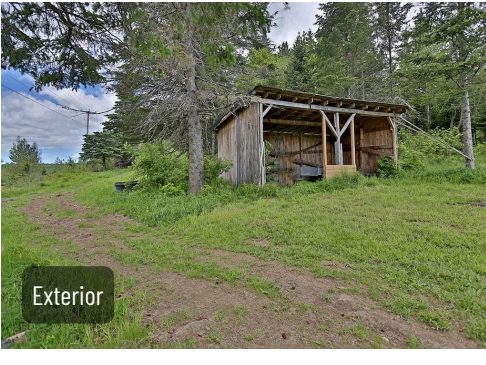
Exterior



Garage



Exterior



Exterior



# PICTURES



Exterior



Aerial photo



Aerial photo



Aerial photo